

WG1.6 Bluetooth Gas Meter

■ STANDARD

Comply with international standard EN1359, OIML R137 and MID2004/22/EC.

■ MATERIALS

Body case made of die-casting high-quality(galvanized)steel. Diaphragm made of synthetic rubber with long life and temperature resistant. Valve and valve seat made of advanced PF synthetic resin.



■ Meter Features

- Gas Consumption and Data Freezing
- Remote Reading
- Prepaid function
- Power Monitoring
- Display and Alerts
- 10 Years service life

■ SPECIFICATION

Nominal Flow Rate	1.6 m3/h	
Max. Flow Rate	2.5m3/h	
Min. Flow Rate	0.016m3/h	
Total Pressure Lose	≤200Pa	
Operation Pressure Range	0.5~50kPa	
Cyclic Volume	1.2dm ³	
Permissible Error	Qmin≤Q<0.1Qmax	±3%
	0.1Qmax≤Q≤Qmax	±1.5%
Min. Recording Reading	0.2dm ³	
Max. Recording Reading	99999.999m ³	
Operation Ambient Temperature	-10~+55℃	
Storage Temperature	-20~+60℃	
Service Life	More than10 years	
Connection Thread	NPT 3/4 or Customized.	
Communication	Bluetooth	

■ **Bluetooth feature**

- Support Android system
- Direct ready via Phone
- Data uploading via Phone
- Low-consumption Bluetooth module



■ **Bluetooth reading solution system**



■ **System Main Functions**

- Consumption Data
- Operation Control
- Operation & Maintenance
- Value-Added Service

■ **Alarms Features**

- Tamper/ event Flag
- Communication failure
- Low battery
- Low Credit

■ **Vending system features**

- Friendly interface
- Online top up(web &app)
- Multi-tariff optional
- Holiday/Weekend optional
- Emergency credit

■ QUALITY CONTROL

Seven steps quality control of leakage test

20 years production experience.

■ FEATURES

360 degree rotating valve designing

Customized connection thread
Sealing cannot be removed without breakage

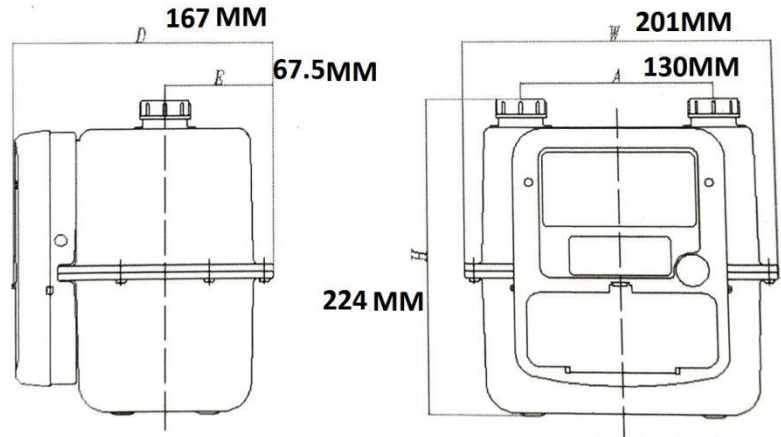
■ APPLICATION

Nature gas, Biogas, LPG and all non-corrosive gas

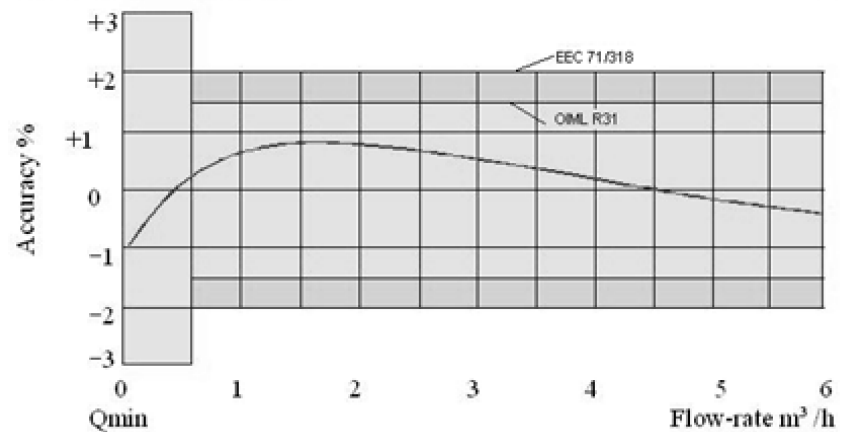
■ INSTALLATION:

1. Leakage checking before installation by inflating pressurized maximum 50 kPa. Far away from inflammable, explosive or poisonous gas and objects.
2. The gas meter should be installed in a dry place and 1.5m at least from hearth. The case of putting it in bedroom or bathroom is strictly forbidden.
3. Bumping, inverting or dampening should be prohibited in storage and transportation.

■ DIMENSIONS(MM):



TOPIC ERROR CURVE



PRESSURE LOSS CURVE

